

PR SERIES

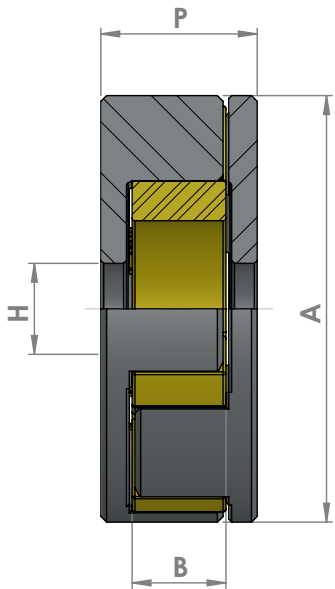
FORGED STEEL
FLEXIBLE COUPLINGS



0-16,900 Nm

DESCRIPTION

- ◆ Torsion-flexible claw couplings with a compact and lightweight design. Forged steel guarantees a long service life and excellent performance.
- ◆ The couplings feature a nickel surface treatment, which provides protection against corrosion.
- ◆ For the same Spider size, all series are interchangeable, offering great versatility for any application.



FEATURES

- ◆ Flexible Spider-shaped torque couplings with flange connection on both sides.
- ◆ Custom-made screw fastening system.
- ◆ Allows radial disassembly without moving the driving or driven part.



			Nominal Torque (Nm)									
Reference	Spider A x B	Ø Inside Spider	85° ShA	90° ShA	92° ShA	96° ShA	98° ShA	64° ShD	MAX R.P.M.	P	H	Weight (kg)
PR-75	75x16	31	80	80	100	-	170	210	9.500	27	37	0,51
PR-90	90x20	37	160	160	210	-	370	460	8.000	32	37	0,85
PR-105	105x20	49	270	270	310	-	525	650	7.000	36	19	1,5
PR-120	120x20	47	400	400	420	-	695	860	6.000	38	23	2,2
PR-135	135x25	55	650	650	670	-	975	1.220	5.500	43	23	3,3
PR-150	150x28	63	900	900	1.050	-	1.575	1.950	4.500	48	26	4,3
PR-175	175x32	67	1.350	1.350	1.450	-	2.175	2.750	4.000	56	26	6,7
PR-200/35	200x35	71	1.900	1.900	2.400	-	3.600	4.500	3.500	61	26	10
PR-200/40	200x40	100	3.050	3.050	3.300	4.125	-	-	3.500	70	26	9
PR-245	245x40	120	4.890	4.890	5.000	6.250	-	-	3.000	80	35	17
PR-300	300x50	168	7.900	7.900	8.500	10.700	-	-	2.300	96	35	28
PR-350	350x55	175	12.000	12.000	13.500	16.900	-	-	2.000	105	37	46